

CHARTS PER PAGE

Continuous

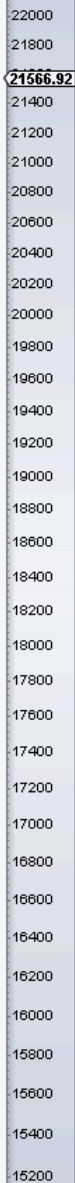
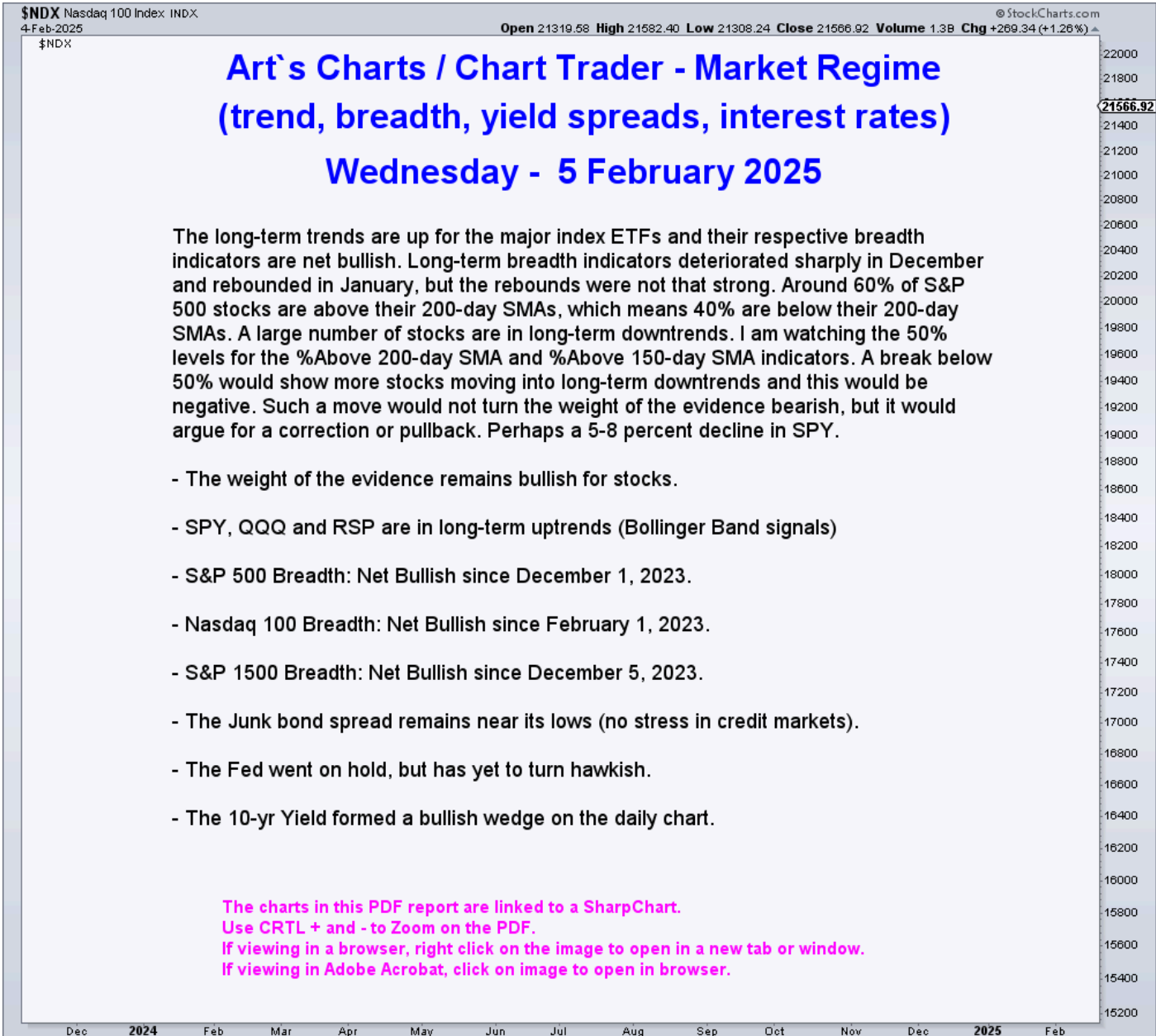
JUMP TO CHART

8931 10-yr Treasury Yield D

Auto-Size



8000 ChartList Title Page





\$SPX S&P 500 Large Cap Index INDXX
4-Feb-2025

Open 5998.14 High 6042.48 Low 5990.87 Close 6037.88 Volume 3.1B Chg +43.31 (+0.72%)

© StockCharts.com

About the Market Regime Charts and Indicators

The charts and indicators on this page define the market regime and answer the most important question for stock market traders. Are we in a bull or bear market? Traders want to take on risk and look for bullish trades in a bull market. Conversely, traders want to reduce risk and raise cash during bear markets. These charts cover the long-term trends for the major indexes, breadth, yield spreads, Fed policy and the 10-yr Treasury Yield.

The first three charts cover the long-term trends and breadth indicators for the S&P 500, Nasdaq 100 and S&P 1500. Bollinger Bands (125,1) define the long-term trends and three breadth indicators measure internal performance. An uptrend signals when price breaks the upper Bollinger Band and remains in place until a break below the lower band. Blue up arrows mark bullish signals, while pink down arrows mark bearish signals.

Each breadth indicator comes with signal thresholds to identify significant shifts and reduce whipsaws. The %Above 200-day SMA indicators turn bullish with a move above 60% and remain bullish until a move below 40%, which triggers a bearish signal. Signal thresholds are at 70% and 30% for the %Above 150-day SMA indicators. Thresholds are at +10% and -10% for the High-Low Percent indicators (percentage of 52-week highs less the percentage of 52-week lows). Blue up arrows mark bullish signals, while pink down arrows mark bearish signals.

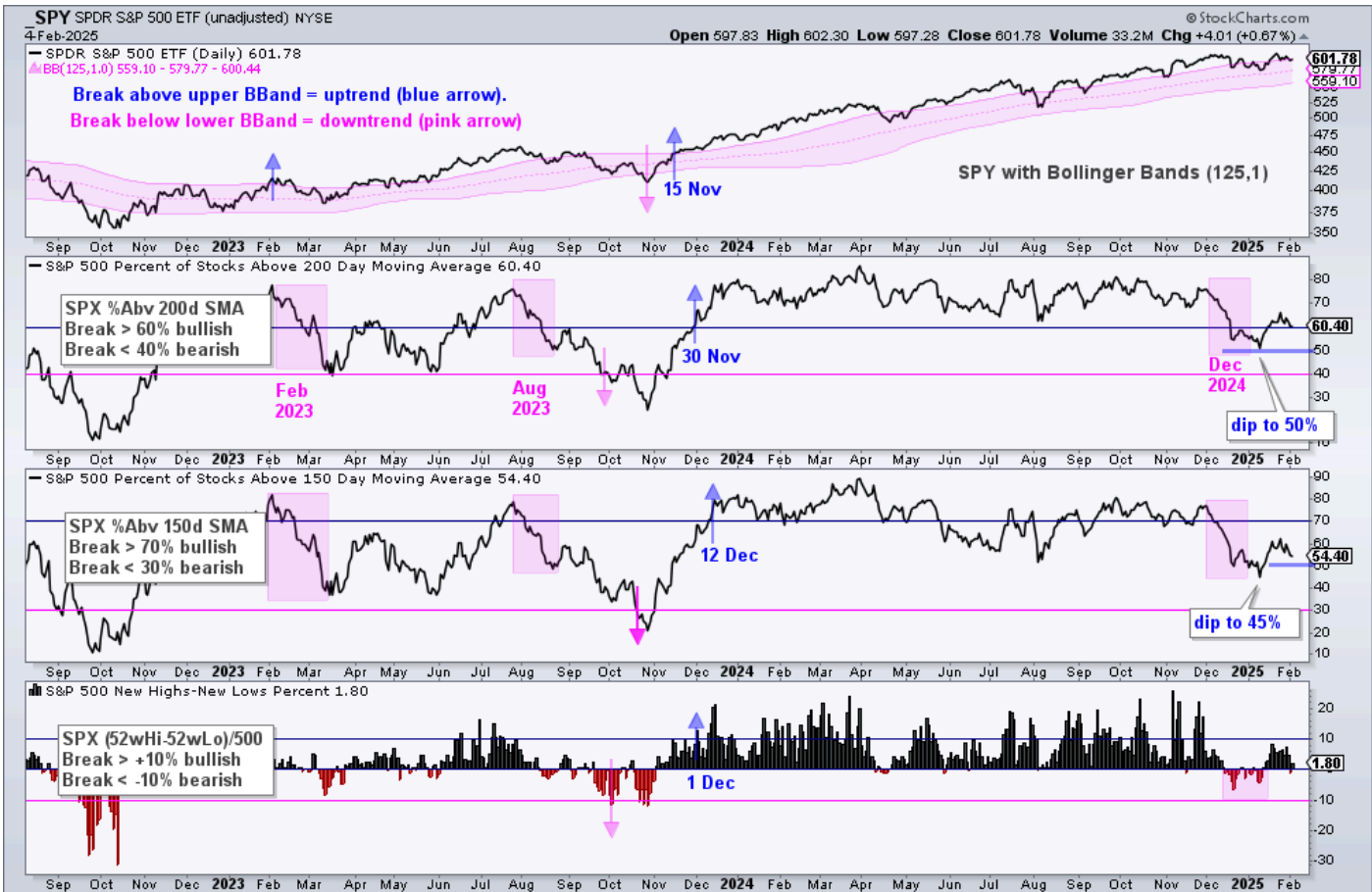
The Junk Bond yield spread (ICE BofA High Yield Index Option-Adjusted Spread) measures the difference between junk bond yields and comparable yields for US Treasury bonds. This spread captures the mood of the credit markets. Spreads widen (rise) when there is stress, and this is bearish for stocks. Spreads narrow (fall) when there is confidence, and this is bullish for stocks.

The Fed Funds target rate (\$FEDTGT) tells us the latest moves at the Fed (easing or tightening). We also show the 3-month Treasury Yield, which sometimes leads the Fed by rising ahead of a tightening cycle or falling ahead of a loosening cycle. The 10-yr Treasury Yield reflects the outlook for economic growth, the prospects for inflation and/or supply/demand dynamics in the Treasury bond market.

6100
6050
6037.88
6000
5950
5900
5850
5800
5750
5700
5650
5600
5550
5500
5450
5400
5350
5300
5250
5200
5150
5100
5050
5000
4950
4900
4850
4800
4750
4700
4650
4600
4550
4500
4450
4400
4350

Dec 2024 Feb Mar Apr May Jun Jul Aug Sep Oct Nov Dec 2025 Feb

8110 Long-term Trend & Breadth SPX

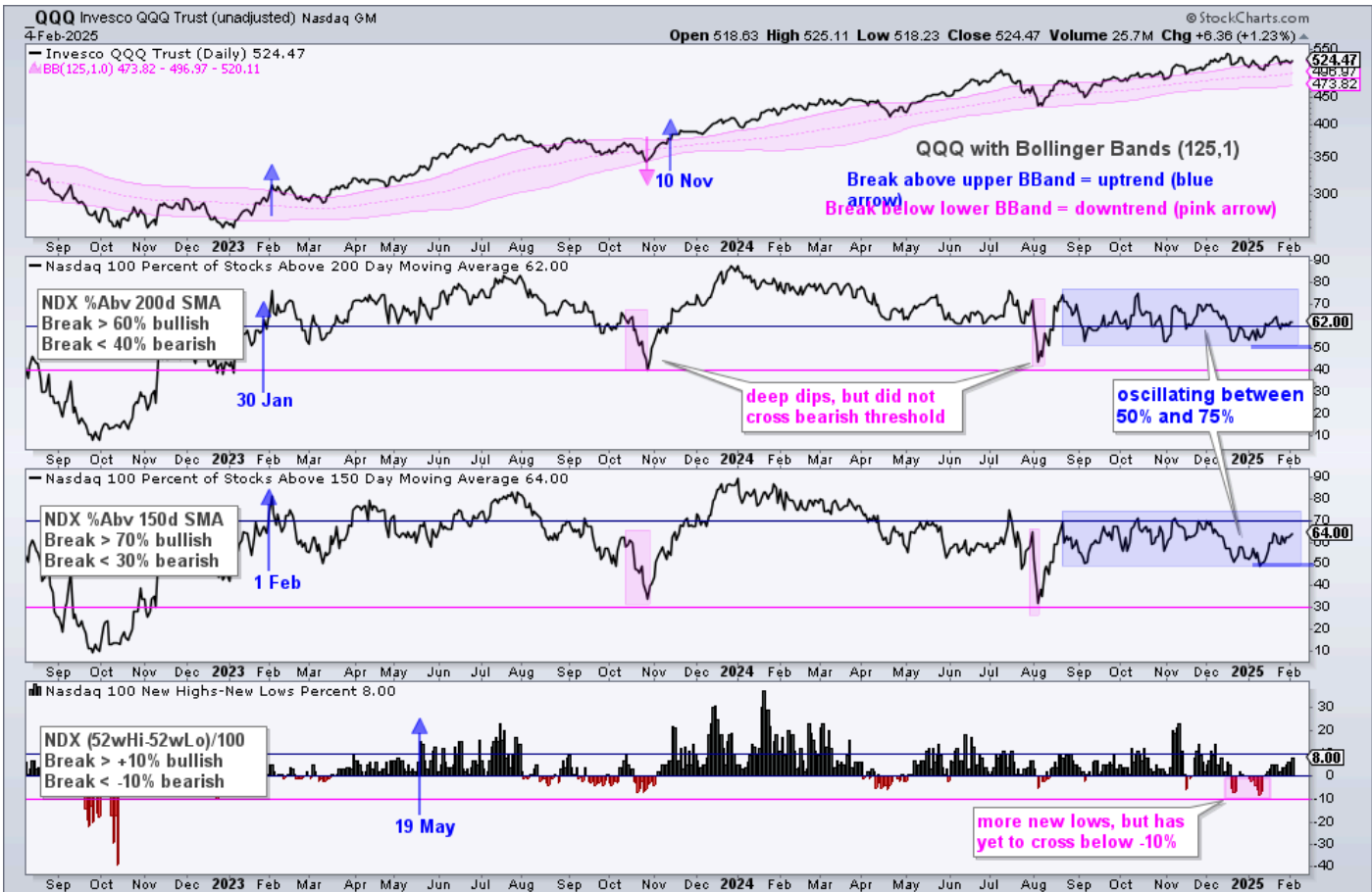


SPY Trend and S&P 500 Breadth // SPY remains in an uptrend and all three breadth indicators are bullish. SPY started its uptrend with the Bollinger Band breakout on 15-November-2023 and the three breadth indicators turned bullish in November-December 2023 (blue arrows).

The breadth indicators were hit hard in December 2024 (pink shading) as SPX %Above 200-day fell to 50% and SPX %Above 150-day fell below 50%. These indicators recovered in January, but did not come close to their prior highs and did not exceed 65%. Currently, 60.40% of S&P 500 stocks are above their 200-day SMAs and 54.4% are above their 150-day SMAs. This means around 40% are below their 200-day SMAs and 45% are below their 150-day SMAs. This shows some sizable pockets of weakness within the S&P 500, even though SPY is trading near a 52-week high.

If has yet to happen, but a downturn from here could lead to significant deterioration under the surface. The blue horizontal lines are at 50% and a break below these levels would show a significant increase in downside participation. This, in turn, could lead to a correction. As far as a bear market signal, I will cross that bridge when and if it gets here.

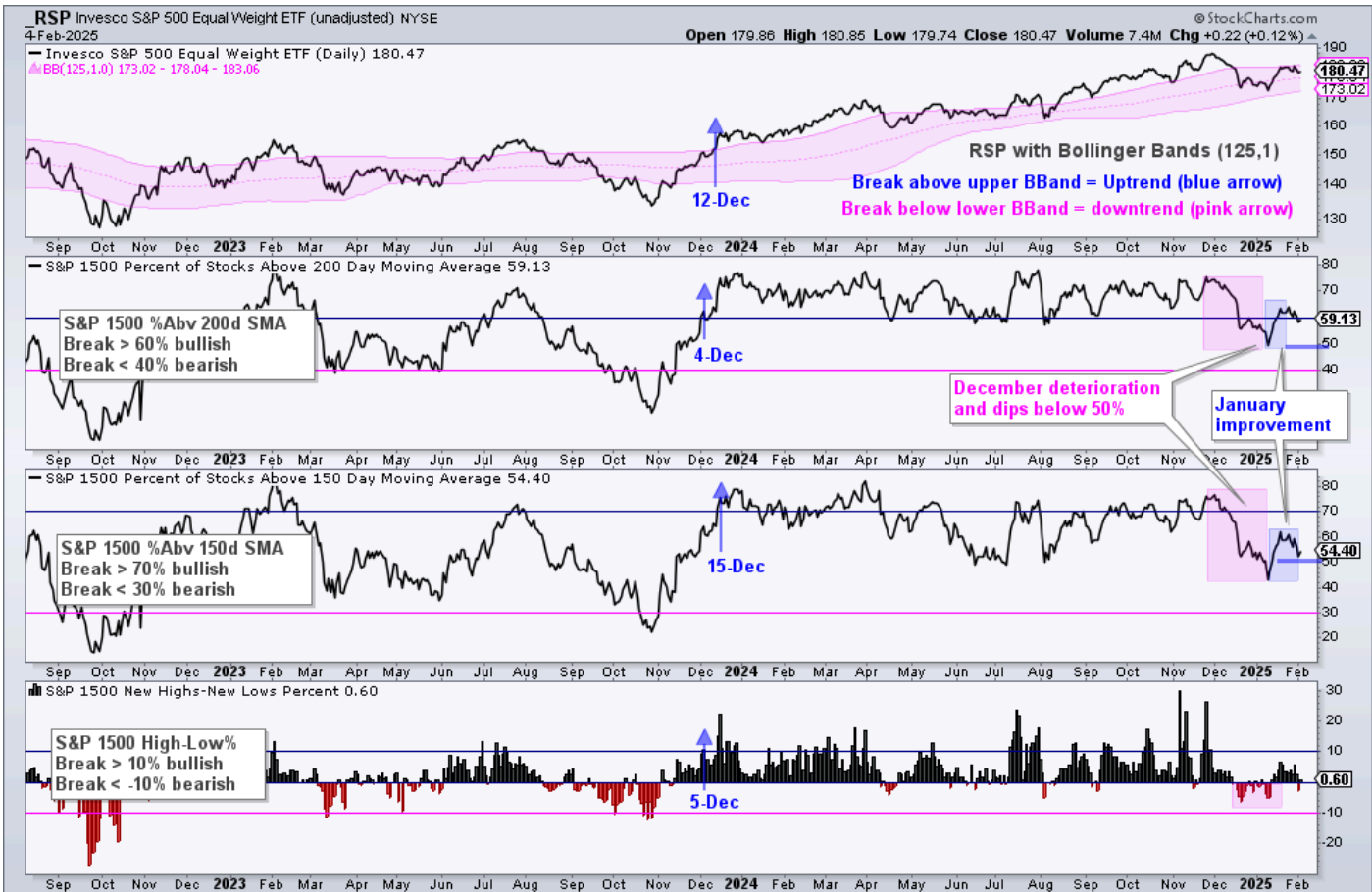
8111 Long-term Trend & Breadth NDX



QQQ Trend and Nasdaq 100 Breadth // QQQ remains in an uptrend and all three breadth indicators are bullish. QQQ signaled an uptrend when it broke the upper Bollinger Band in November 2023 and the breadth indicators triggered bullish in January, February and May 2023 (blue arrows).

The blue shadings on the right side show NDX %Above 200-day SMA and NDX %Above 150-day SMA oscillating between 50% and 75%. They continue to hold above 50% and keep the cup half full when it comes to the percentage of stocks in long-term uptrends. Moves below 50% would show deterioration within the Nasdaq 100 and this could lead to a broad correction. As far as a bear market signal, I will cross that bridge when and if it gets here.

8112 Long-term Trend & Breadth RSP



RSP Trend and S&P 1500 Breadth // The S&P 500 EW ETF (RSP) remains in an uptrend and all three breadth indicators are bullish. RSP started its uptrend with a Bollinger Band breakout in December 2023 and the breadth indicators also triggered bullish in December 2023 (blue arrows).

The December deterioration (pink shading) was the most pronounced here as S&P 1500 %Above 200-day and %Above 150-day dipped below 50% for a few days. Both recovered in January, but did not make it back above 65% as a sizable pocket of the market remained below these long-term moving averages. I am marking the 50% level with blue lines and a break below 50% would show further deterioration in long-term breadth. This would be negative and argue for a broad market correction. As far as a bear market signal, I will cross that bridge when and if it gets here.

8900 Yield Spreads



Junk Bond Yield Spread // The middle window on the chart above shows the Junk Bond Yield Spread (\$\$HYIOAS) falling (narrowing) since 2023 (blue arrow-line) and hovering near its low here in early February 2025. There are no signs of stress in the credit markets and this is net positive for stocks.

It is almost impossible to predict a credit scare. A surge above the December high and 200-day SMA would show an increase in stress levels. This would be negative for stocks and likely coincide with some sort of pullback or correction. For now, the long-term trend is down (narrowing) and we have yet to see a move that threatens this downtrend.

The pink shadings show three sharp widening periods when the Junk bond yield spread broke out and exceeded its 200-day SMA. The Silicon Valley Bank collapse triggered a panic in March 2023 and the Yen carry-trade fiasco created a scare in August 2024. The blip in September-October 2023 coincided with a deep decline in stocks and a break below the 200-day SMA in SPY.

8910 Fed Funds Rate (Fed Policy)

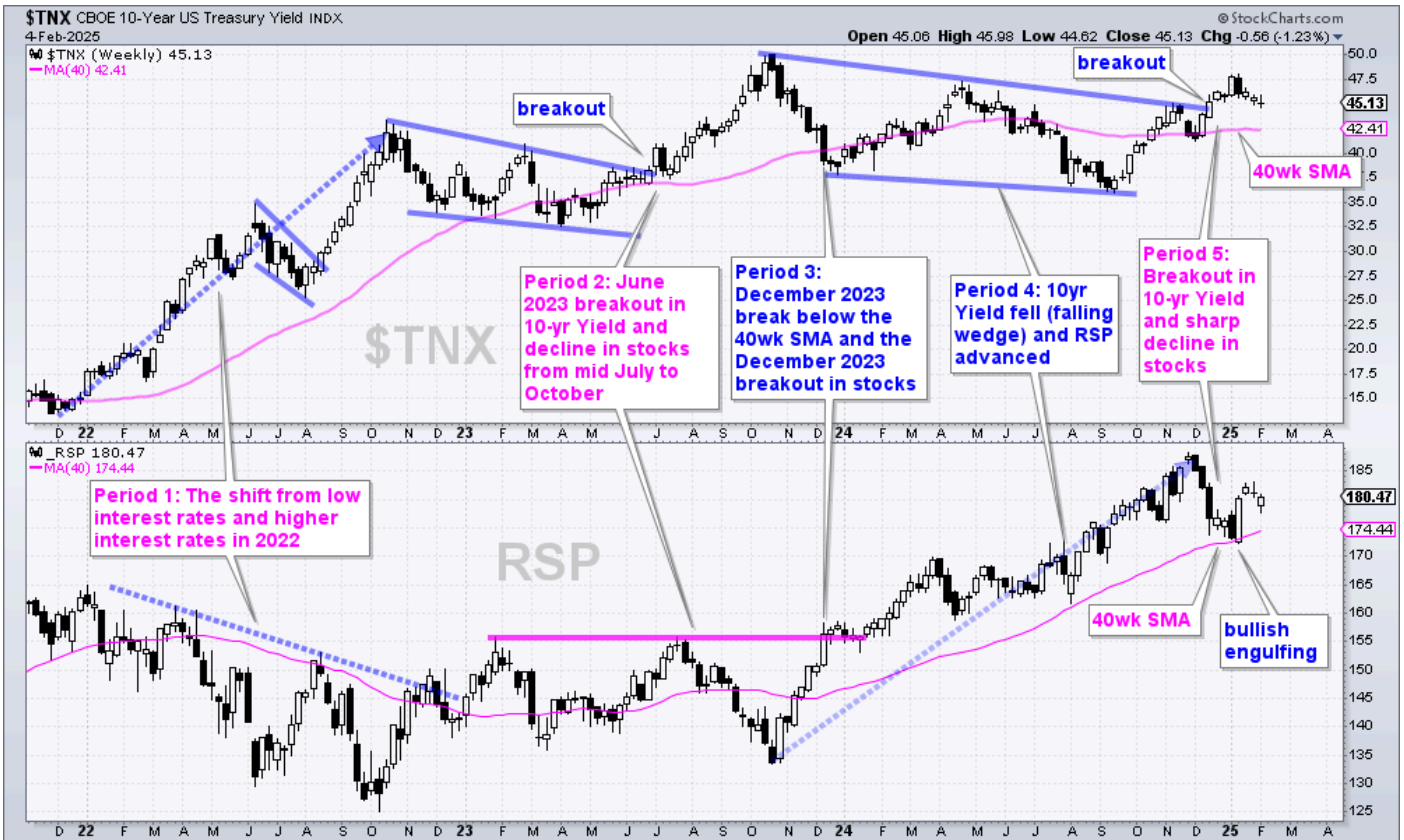


Fed Policy // The chart above shows the Fed Funds Target Rate (\$FEDTGT) falling since September as the Fed embarked on an easing cycle. A dovish Fed is net positive for stocks. Notice that the 3-month Treasury Yield (\$UST3M) peaked in July and fell before the Fed made its first rate cut, which was on September 16th. I am watching the 4.5 percent level going forward. A break above this level would show an upturn in short-term rates and this could foreshadow a shift in Fed policy.

At the FOMC meeting on January 29th, Federal Reserve Chair Jerome Powell noted their intention to hold interest rates in the 4.25 to 4.5 percent range for the foreseeable future. The Fed is on hold as it awaits further clarification on the policies of the current government. The next FOMC meeting is March 18-19.

There are many drivers when it comes to the US Treasury market. These include the economic outlook, inflation expectations, government policies and supply/demand dynamics. Short-term Treasury yields are also influenced by these factors, but they are more closely aligned with Fed policy and the Fed funds rate.

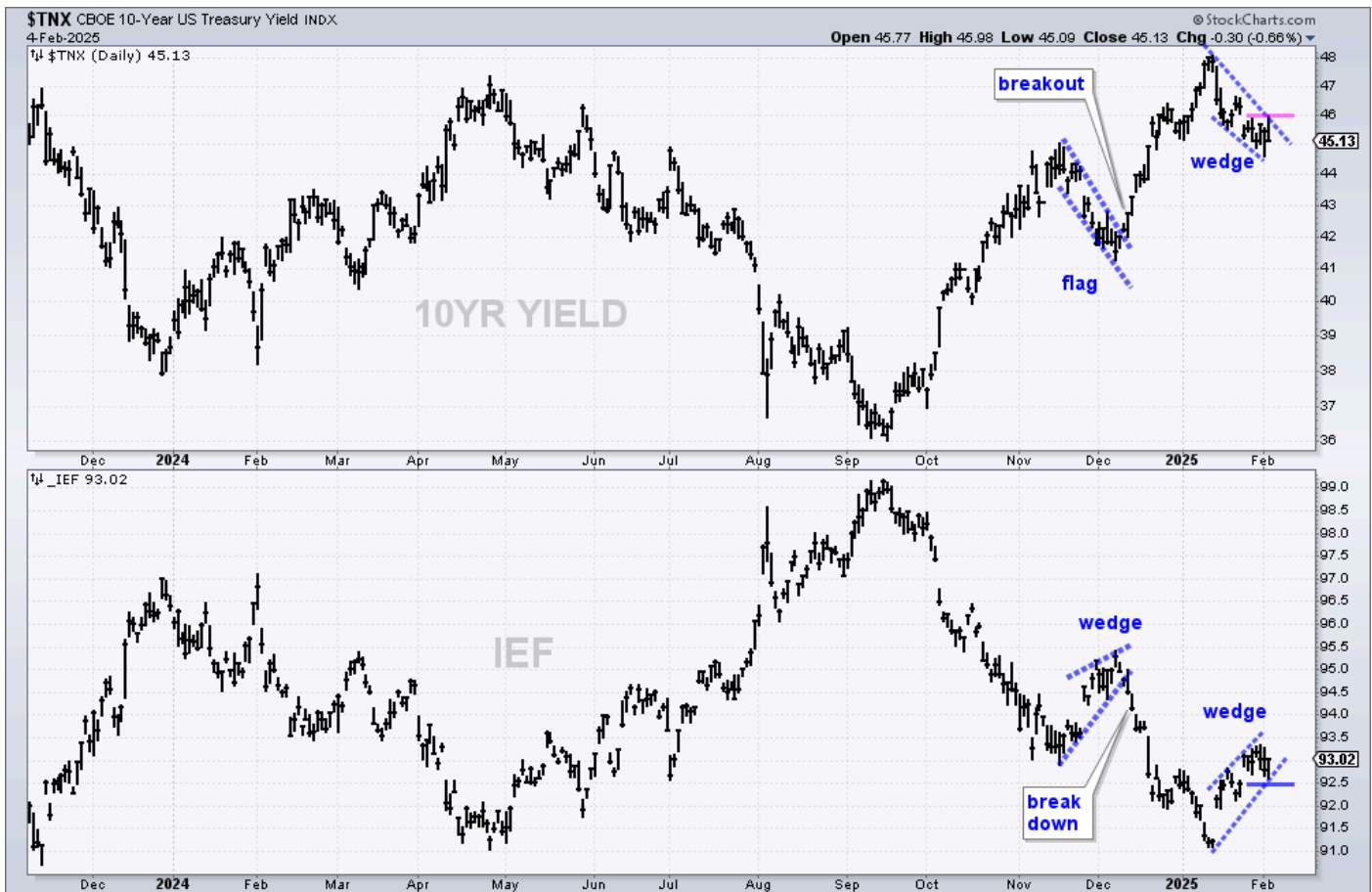
8930 10-yr Treasury Yield W



10-yr Treasury Yield // Even though the Fed is in easing mode, the chart above shows the 10-yr Treasury Yield breaking out of a large falling channel in mid December. This breakout argues for a move towards the 5% area and a similar move weighed on stocks in summer 2023 (Period 2). After a five week advance to 48 (4.8%), the yield fell back to the 45.3 area (4.53%). This is a small pullback after a big advance so I am not going to read too much into it just yet. Further weakness below 45 (4.5%) would provide the first sign that the breakout is failing.

There are four distinct periods on this chart. Period 1 shows the shift from low interest rates to higher interest rates in 2022, and the 2022 bear market. Period 2 shows the wedge breakout in June 2023 and the move to 5% (50 on the chart). Stocks peaked in mid July 2023 and fell sharply into October. We then have the dramatic decline in the 10-yr Treasury Yield in November-December (Period 3) and the continued decline into September 2024 (Period 4). Stocks advanced into November 2023 and then moved sharply lower in December as the 10-yr Treasury Yield broke out near 4.5% (45).

8931 10-yr Treasury Yield D



Bull Wedge for 10-yr Treasury Yield and Bear Wedge for TLT // The 10-yr Treasury Yield surged from early December to early January and briefly exceeded its 2024 high. It then fell back with a falling wedge the last three weeks and this could be a bullish continuation pattern. A breakout at 46 (pink line) would be bullish and signal a continuation of the December surge.

The 20+ Yr Treasury Bond ETF (TLT) fell to its April 2024 lows with a sharp decline into early January and bounced with a rising wedge. This could be a bearish continuation pattern. A break below 92.50 (blue line) would reverse this upswing signal a continuation lower.

Note that an upside breakout in the 10-yr Treasury Yield and a downside break in TLT would be negative for small-caps (IWM, IJR).

CHARTS PER PAGE

JUMP TO CHART

Continuous

8931 10-yr Treasury Yield D

Auto-Size

 ChartList Notes



© StockCharts.com, Inc. All Rights Reserved.

[Terms of Service](#)

[Privacy Statement](#)

[Site Map](#)

Market data provided by **Xignite, Inc.** Commodity and historical index data provided by **Pinnacle Data Corporation.** Cryptocurrency data provided by **CryptoCompare.** Unless otherwise indicated, all data is delayed by 15 minutes. The information provided by StockCharts.com, Inc. is not investment advice. Trading and investing in financial markets involves risk. You are responsible for your own investment decisions.